

Lea Bridge Road

In 2014, Waltham Forest Council was awarded £27million by Transport for London for the Mini-Holland Programme to improve the borough's roads and town centres making them great places to live, work and travel around.

Lea Bridge Road is one of a series of cycling and walking routes to receive funding and become part of the Mini-Holland routes scheme. Lea Bridge Road is one of the key routes in the borough running from the Whipps Cross Roundabout to the Lee Valley Ice Centre near the Hackney Boundary. The road is used by up to 30,000 vehicles and 1,500 cyclists every day and is primarily used by people travelling through the borough into neighbouring Hackney and further into the heart of London.

Between 13 March and 3 April 2015, we conducted a survey with residents, businesses, cyclists and visitors to find out what local people think about the area and the type of improvements they would like to see.

The surveys were available online, hand delivered to all households in the area and conducted face to face. Over 1,300 people and 175 businesses took part in the surveys.

The results from the perception surveys have been used to inform the design for the Lea Bridge Road scheme.

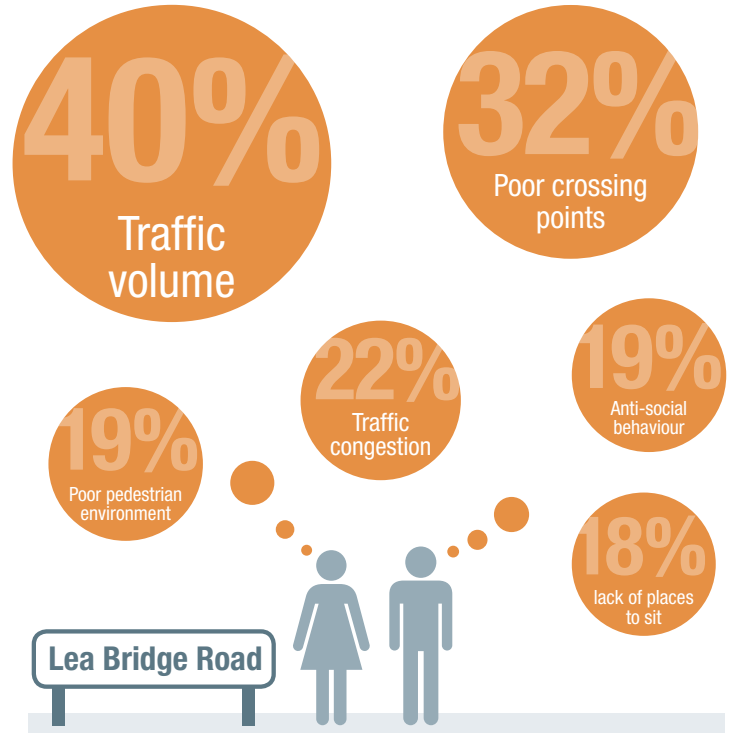
The headline results from the survey are below:

Visitor survey results

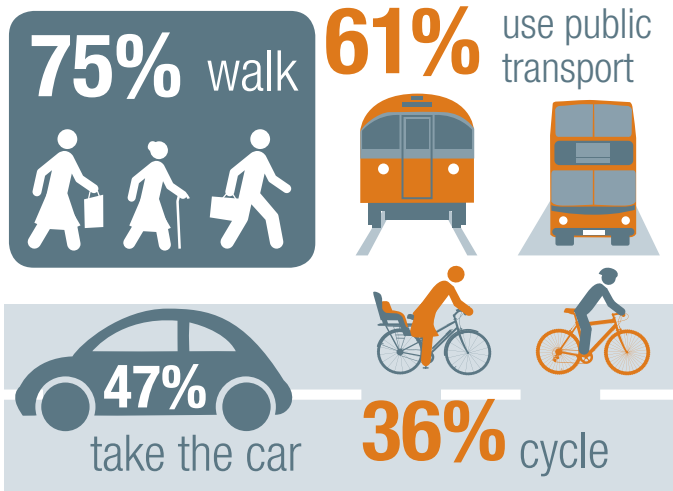
Top four changes visitors to Lea Bridge Road would like to see



Visitor problems



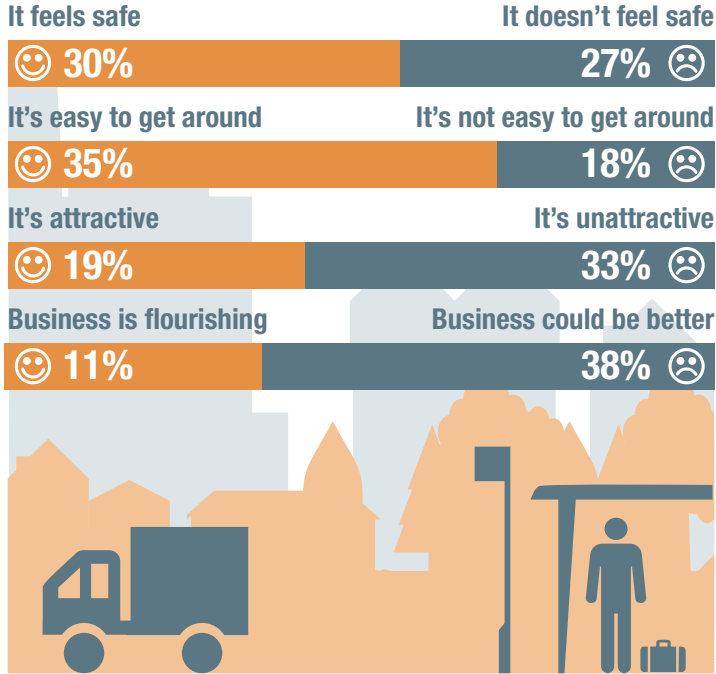
How respondents travel on Lea Bridge Road



Lea Bridge Road

Business survey results

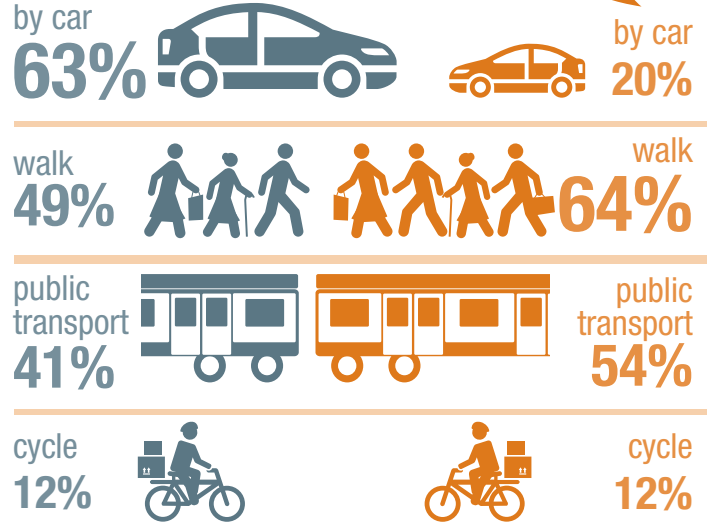
Business feelings towards Lea Bridge Road



Businesses

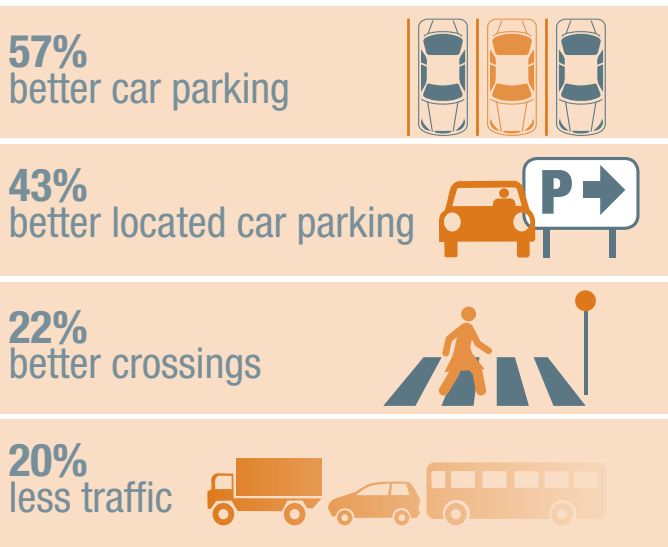
on Lea Bridge Road think their customers travel to the area:

However, visitors said they travelled:



The top four things

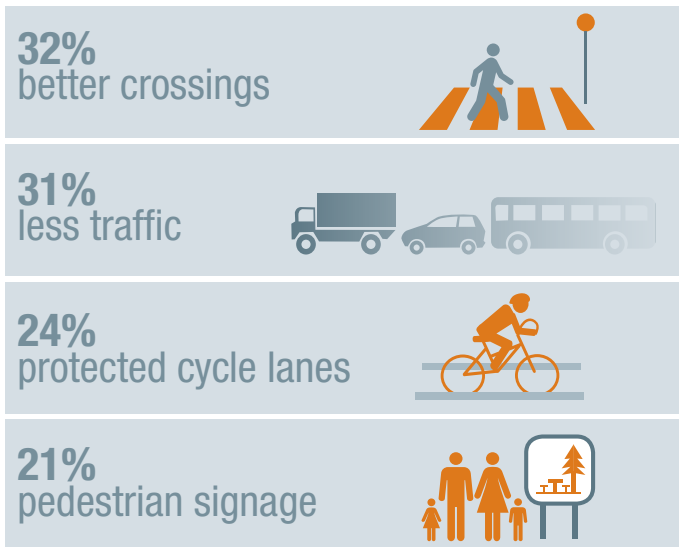
businesses think will improve access to Lea Bridge Road for their customers



VS

The top four things

visitors think will improve access to Lea Bridge Road



Lea Bridge Road

Perception survey results

60%



of respondents feel that some places on Lea Bridge Road don't feel safe

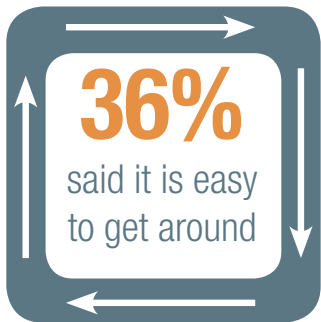
13%

said business and shops are **good**



36%

said it is easy to get around



38% feel some areas don't feel like a community



51%

think some places are unattractive



48%

Less traffic



50%
Safer crossing points



Top four changes respondents would like to see to make Lea Bridge Road more pleasant for walking and cycling

55%
Protected cycle lanes



53%

More plants and trees



Top changes **businesses** on Lea Bridge Road would like to see

23%

Less traffic



25%

Better retail/business mix



29%

More street greening



32%

More attractive streets



For more information on this scheme and the Mini-Holland Programme visit www.enjoywalthamforest.co.uk.